

Corridor Sketch Summary

SR 260: SR 17 Jct to US 395 Jct (Connell)

Highway No. 260

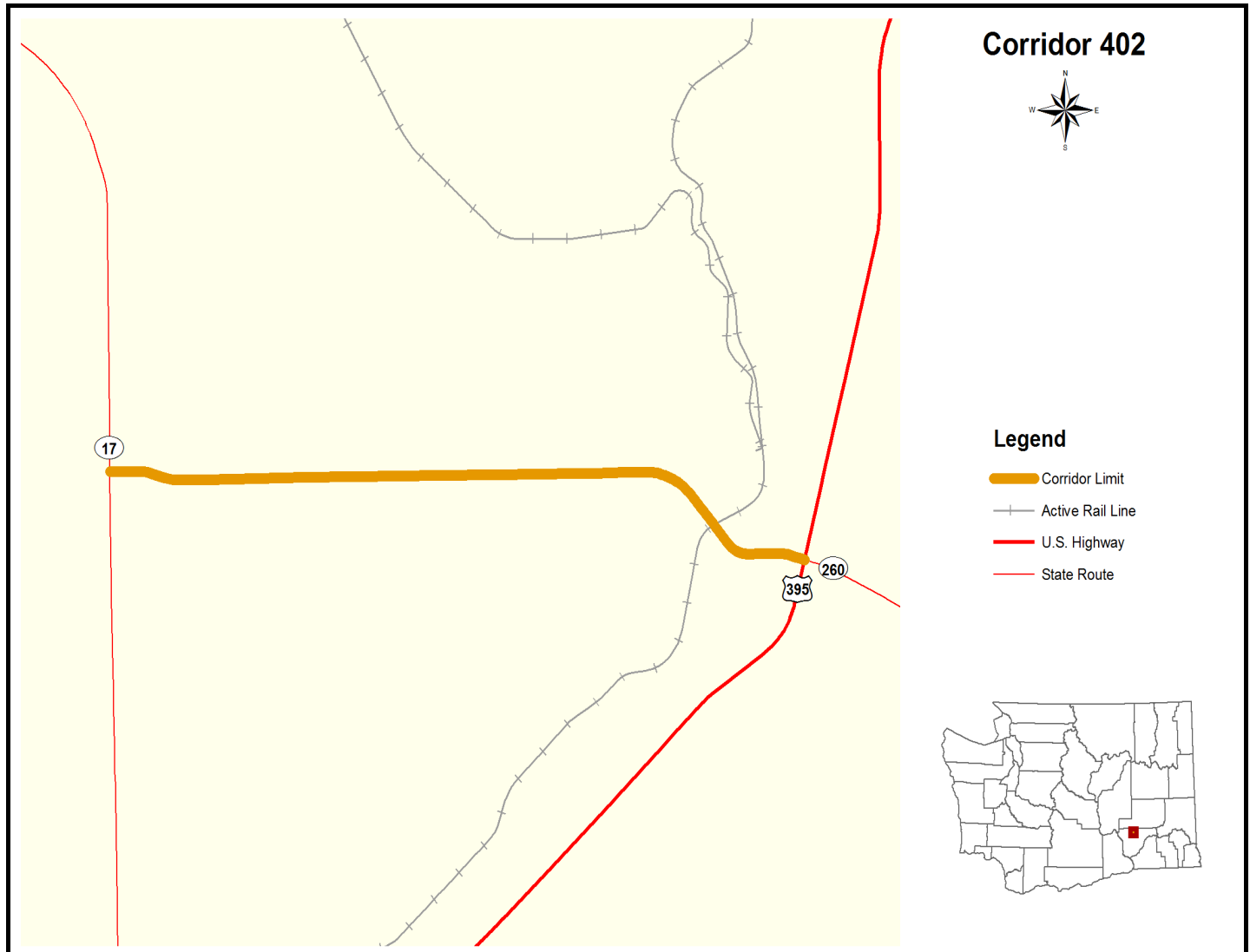
Mileposts: 0 to 7.55

Corridor 402

Length: 7.55 miles

Corridor Description

This corridor begins at SR 17 and ends at the US 395 interchange in Connell. The highway traverses flat, irrigated farmland and crosses the BNSF mainline in Connell.



Corridor Function

Current Function

SR 260 is classified as a rural major collector (R3) and is a T-3 freight corridor. This highway provides access for local farmland to Connell and US 395. The corridor experience low traffic volumes.

Future Function

The function of SR 260 is not expected to change.

Comments or feedback on function

Preservation

Policy Goal: To maintain, preserve, and extend the life and utility of prior investments in transportation system and services.

What's Working Well?

What Needs to Change Today?

The pavement surface is past due per the WSPMS.

What Needs to Change in the Future?

Comments or feedback on preservation

Safety

Policy Goal: To provide for and improve the safety and security of transportation customers and the transportation system.

What's Working Well?

What Needs to Change Today?

Portions of this corridor could benefit from shoulder widening.

What Needs to Change in the Future?

At some point, channelization may be needed at higher volume intersections. The SR 260/S Columbia Ave intersection may be a candidate for upgraded intersection control in the future.

Comments or feedback on safety

Mobility

Policy Goal: To improve the predictable movement of goods and people through Washington State, including congestion relief and improved freight mobility.

WSDOT currently defines congestion for system screening as locations that currently or are projected to operate below 70% of the posted speed limit during peak hour. Statewide analysis is preformed to screen at three time periods: current year, ten year and twenty year.

What's Working Well?

What Needs to Change Today?

What Needs to Change in the Future?

Comments or feedback on mobility

Environment

Policy Goal: To enhance Washington's quality of life through transportation investments that promote energy conservation, enhance healthy communities, and protect the environment.

What's Working Well?

What Needs to Change Today?

SR 260 in the vicinity of milepost 6 is ranked as a medium habitat connectivity investment priority.

What Needs to Change in the Future?

Most of this section of SR 260 is ranked as a low habitat connectivity investment priority and is at low risk for climate impact vulnerability.

Comments or feedback on environment

Economic Vitality

Policy Goal: To promote and develop transportation systems that stimulate, support and enhance the movement of people and goods to ensure a prosperous economy.

What's Working Well?

What Needs to Change Today?

What Needs to Change in the Future?

Comments or feedback on economic vitality