

Corridor Sketch Summary

US 12: SR 124 Jct (Pasco) to Idaho Border

Highway No. 012

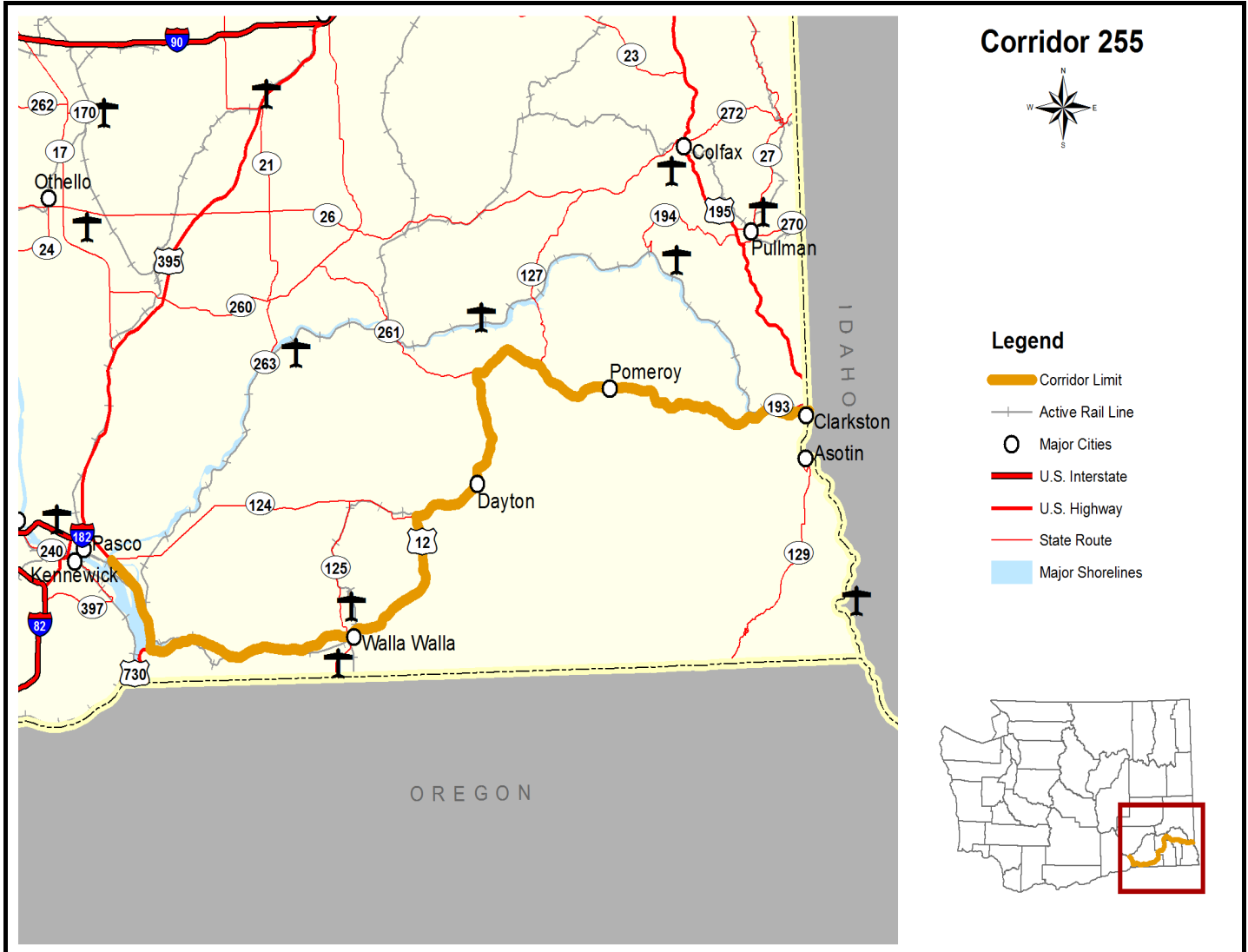
Mileposts: 295.3 to 434.19

Corridor 255

Length: 138.4 miles

Corridor Description

US 12 is a primary east-west statewide route, connecting Aberdeen, on the west side of the state, with Clarkston, in the southeast corner of Washington. This 138 mile segment of US 12 traverses primarily rural and agricultural areas between Pasco and the Idaho border at Clarkston. It is important for freight traffic and recreation area access. It is a Highway of Statewide Significance and part of the National Highway System. The corridor is classified by the Freight & Goods Transportation System as a T-1, T-2 or T-3 freight route, depending on location. Typically, as the route approaches Clarkston and the state line, freight tonnage declines. The west end of the corridor carries 9.7 million tons of freight annually, while the east end handles 2.9 million tons.



Corridor Function

Current Function

The entire corridor is classified as a Principal Arterial. It is part of the National Highway System and is a Highway of Statewide Significance. The corridor is considered a high speed corridor except for less than 10 miles of the 138.40 mile corridor.

Future Function

This corridor is one of the major east/west highways for the state of Washington. There are current plans to finish adding lanes on the section of US 12 between Pasco and Walla Walla.

Comments or feedback on function

Preservation

Policy Goal: To maintain, preserve, and extend the life and utility of prior investments in transportation system and services.

What's Working Well?

Majority of existing pavement is in decent condition with future year due dates for replacement.

What Needs to Change Today?

As sections of pavement fall below the adopted statewide standard, preservation projects need to be funded. Corridor assets will be monitored or inspected according to WSDOT's Asset Management Plan (out for statewide review)

What Needs to Change in the Future?

The majority of the pavement surface will need to be resurfaced in the future.

Comments or feedback on preservation

Safety

Policy Goal: To provide for and improve the safety and security of transportation customers and the transportation system.

What's Working Well?

What Needs to Change Today?

Adding better pedestrian facilities thru the City of Waitsburg, City of Dayton, and City of Clarkston. Restriping thru the City of Dayton, as well as, adding better passing opportunities between Waitsburg and Dayton.

Trucks are parking at the US 12/US 730 junction, the weigh station at the US 12/US 730 junction, the weigh station at Kibler Rd, the SR 127 (Dodge) junction, and the Alpowa Rest Area. At this time, there is adequate capacity.

The state should also consider widening the sidewalk on bridge 12/669 over the Touchet River in Waitsburg or adding a barrier between the sidewalk and traffic. There have been concerns about the width of the sidewalk and being adjacent to traffic.

What Needs to Change in the Future?

Adding additional lanes between Pasco and Walla Walla will help with future safety expectations. Phases 7 & 8 will be

constructed in the future.

Future Projects:

US 12 / Nine Mile Hill to Woodward Canyon Rd (Phase 7A) - Add Lanes (Project will replace existing 2-lane roadway with 4-lane facility on new alignment)

US 12 / Woodward Canyon Rd to Frenchtown (Phase 7B) - Add Lanes (Project will replace existing 2-lane roadway with 4-lane facility on new alignment)

US 12 / Attalia Vicinity to Nine Mile Hill (Phase 8) - Add Lanes (Project will replace existing 2-lane roadway with 4-lane facility on new alignment)

US 12 / "A" Street I/S - Build Interchange (Project will construct interchange w/ frontage roads to address safety and economic vitality)

US 12 / Clarkston Vicinity - Add Sidewalks and Access Improvements (Project will complete/repair sidewalks along US 12 and bring to current ADA standards)

The state should also consider widening the sidewalk on bridge 12/669 over the Touchet River in Waitsburg or adding a barrier between the sidewalk and traffic. There have been concerns about the width of the sidewalk and being adjacent to traffic.

Comments or feedback on safety

Mobility

Policy Goal: To improve the predictable movement of goods and people through Washington State, including congestion relief and improved freight mobility.

WSDOT currently defines congestion for system screening as locations that currently or are projected to operate below 70% of the posted speed limit during peak hour. Statewide analysis is performed to screen at three time periods: current year, ten year and twenty year.

What's Working Well?

The corridor appears to operate within an acceptable LOS.

What Needs to Change Today?

There needs to be added lanes between pasco and Walla Walla. Phases 7 & 8 will be constructed in the future. Complete Streets thru City of Waitsburg, City of Dayton, and City of Clarkston

What Needs to Change in the Future?

The Mobility Screen shows a couple of spot location of congestion (V/C @ 0.5). These locations have been Identify by locals as areas of concern (great delay than normal intersections in the area). The locals are Dayton 4th St. I/S (access route to Ski area and Blue Mtns. Rec) and Clarkston Bridge / Diagonals St. I/S.

Adding additional lanes between pasco and Walla Walla will help with future performance expectations. Phases 7 & 8 will be constructed in the future.

Future Projects:

US 12 / Nine Mile Hill to Woodward Canyon Rd (Phase 7A) - Add Lanes (Project will replace existing 2-lane roadway with 4-lane facility on new alignment)

US 12 / Woodward Canyon Rd to Frenchtown (Phase 7B) - Add Lanes (Project will replace existing 2-lane roadway with 4-lane facility on new alignment)

US 12 / Attalia Vicinity to Nine Mile Hill (Phase 8) - Add Lanes (Project will replace existing 2-lane roadway with 4-lane facility on new alignment)

US 12 / Clarkston Vicinity - Add Sidewalks and Access Improvements (Project will complete/repair sidewalks along US

12 and bring to current ADA standards)

Comments or feedback on mobility

Environment

Policy Goal: To enhance Washington's quality of life through transportation investments that promote energy conservation, enhance healthy communities, and protect the environment.

What's Working Well?

What Needs to Change Today?

What Needs to Change in the Future?

Comments or feedback on environment

Economic Vitality

Policy Goal: To promote and develop transportation systems that stimulate, support and enhance the movement of people and goods to ensure a prosperous economy.

What's Working Well?

Access control appears to be adequately serve adjoining land uses.

What Needs to Change Today?

What Needs to Change in the Future?

Adding additional lanes between pasco and Walla Walla will help with future performance expectations.

Future Projects:

US 12 / Nine Mile Hill to Woodward Canyon Rd (Phase 7A) - Add Lanes (Project will replace existing 2-lane roadway with 4-lane facility on new alignment)

US 12 / Woodward Canyon Rd to Frenchtown (Phase 7B) - Add Lanes (Project will replace existing 2-lane roadway with 4-lane facility on new alignment)

US 12 / Attalia Vicinity to Nine Mile Hill (Phase 8) - Add Lanes (Project will replace existing 2-lane roadway with 4-lane facility on new alignment)

US 12 / "A" Street I/S - Build Interchange (Project will construct interchange w/ frontage roads to address safety and economic vitality)

Comments or feedback on economic vitality